



80cm Picture Shelf

ITEM CODE: 397345

Assembly Instructions



15min



(Not provided)



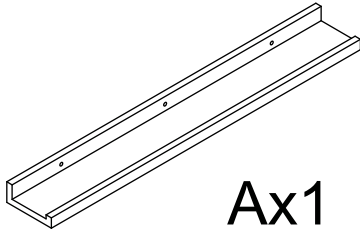
(Not provided)



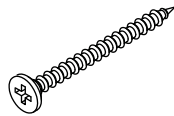
(Not provided)



(Not provided)

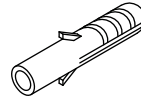


Ax1



M3.5x40mm

Bx3

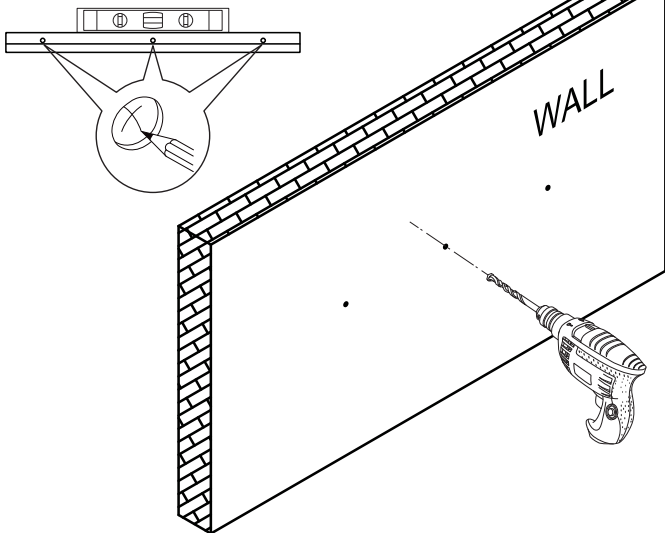


Cx3

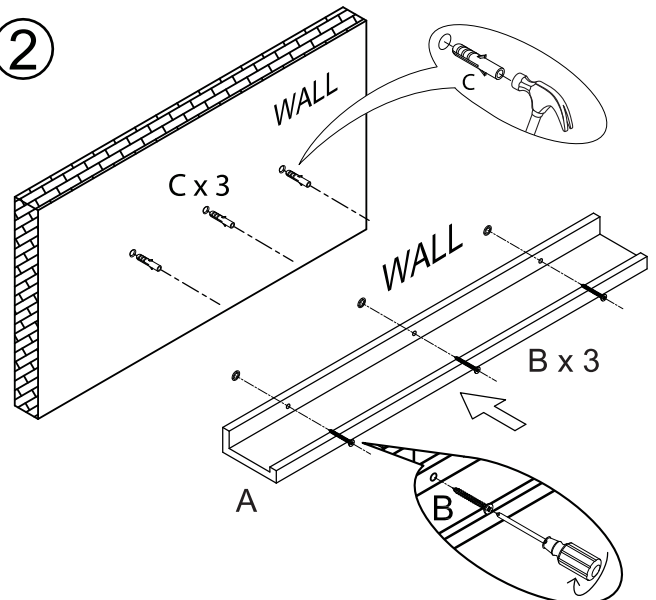


Dx3

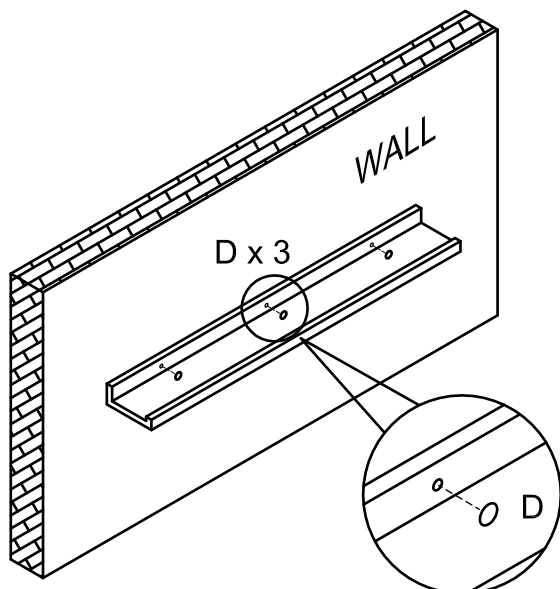
1



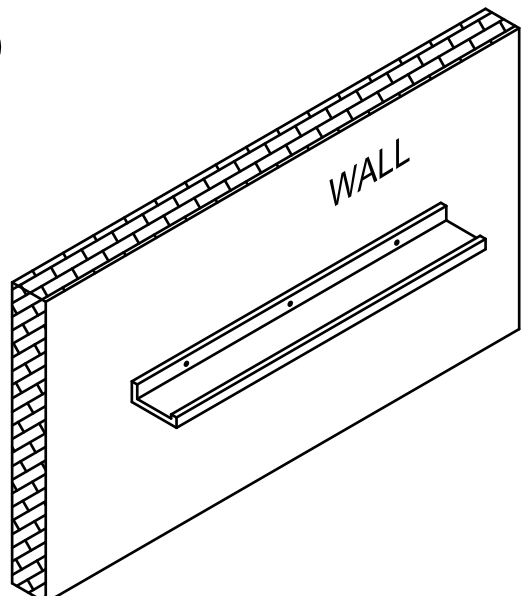
2



3



4



WARNING! Do not leave children unsupervised! The product is not a climbing frame or a toy!
Do not overload. Distribute weight upon this product's surface evenly.
Keep away from fire. Periodically ensure all the screws and fixings are secure and the item is stable.
Make sure that all fixings are secure before use.
Care and cleaning: Wipe clean with dry cloth. Do not use abrasives, solvents and bleach products.
Please read this instructions carefully and retain it for future reference.

Max.Loading: 5kg
Domestic use only

B&M Retail Ltd, L24 8RJ, UK
Homesavers, 5 Old Dublin Rd, Dublin, A94 K1H5
MADE IN CHINA