

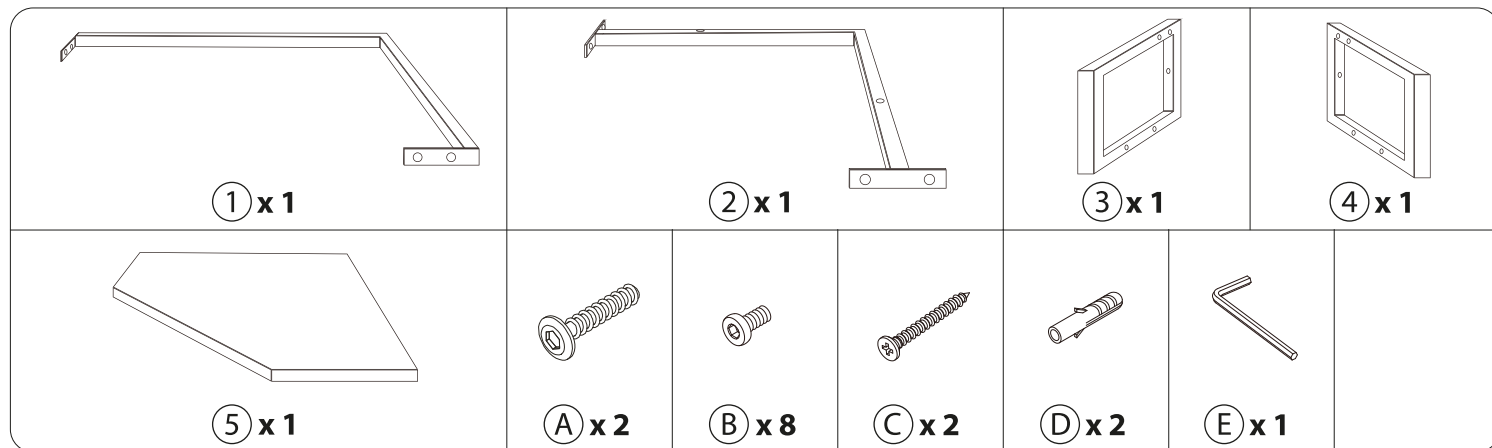


TROMSØ

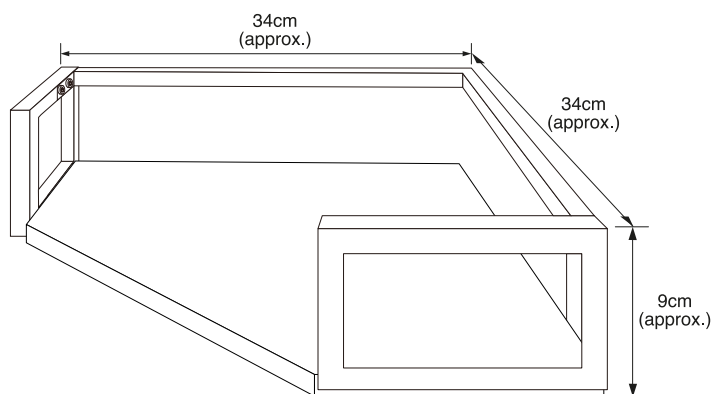
Corner Shelf

ITEM CODE: 405473

Assembly Instructions

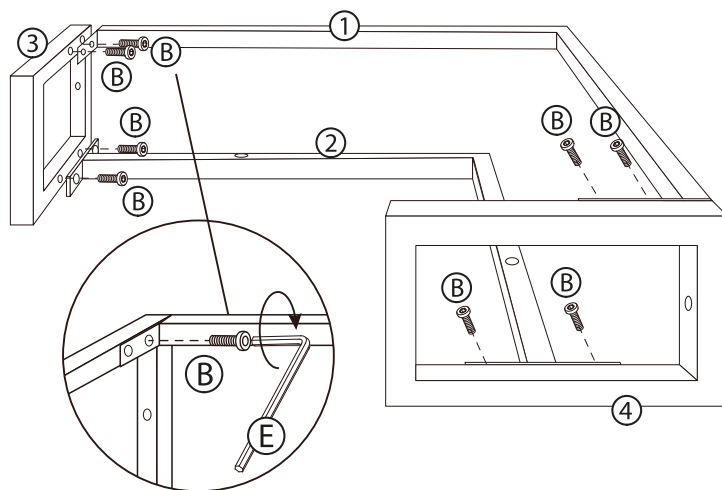


ASSEMBLED DIMENSIONS



Max. Loading: 3kg

STEP 1

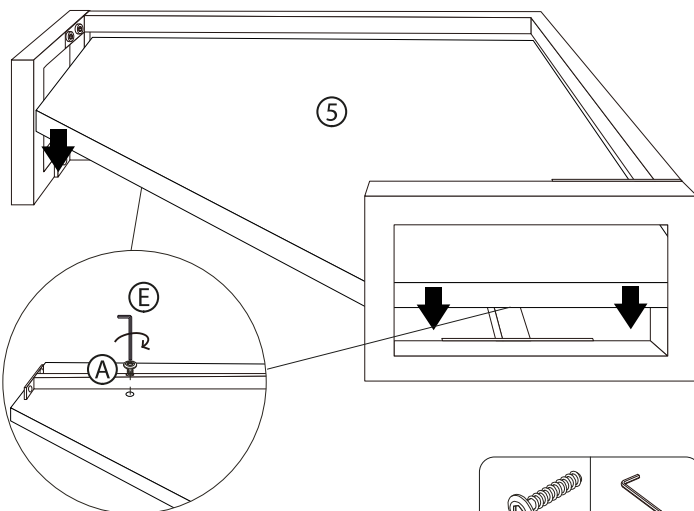


B x 8



E x 1

STEP 2

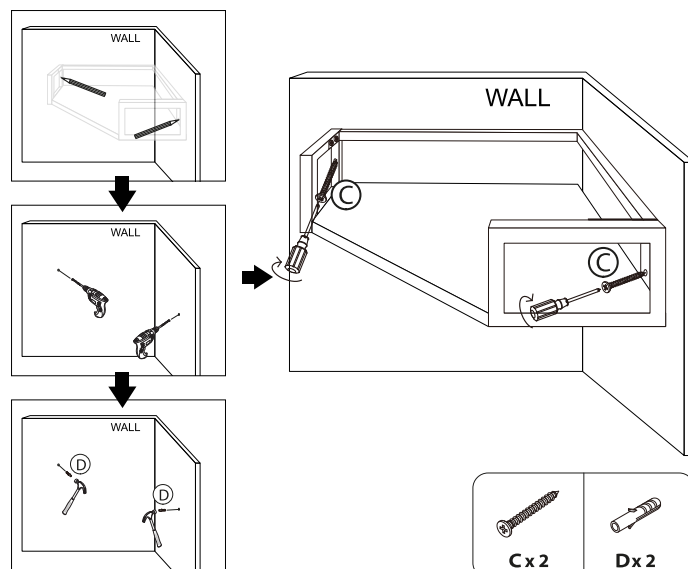


A x 2



E x 1

STEP 3



C x 2



D x 2

WARNING! Keep away from fire.

Periodically ensure all the screws and fixings are secure and the item is stable.

Indoor Use Only. Distribute weight upon this product's surface evenly.

Care and cleaning: Wipe clean with dry cloth. Do not use abrasives, solvents and bleach products.

Please read this instructions carefully and retain it for future reference.

Domestic use only

B&M Retail, L24 8RJ, UK

www.bmstores.co.uk

B&M France SAS, 8 Rue du Bois Joli, 63800, France

MADE IN CHINA

