

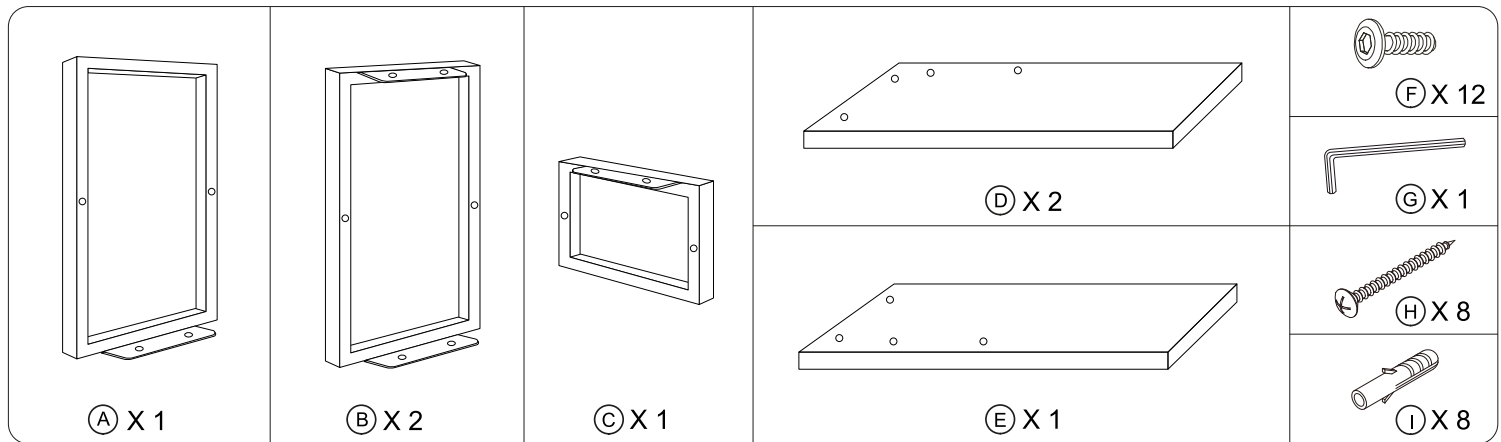


TROMSØ

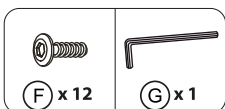
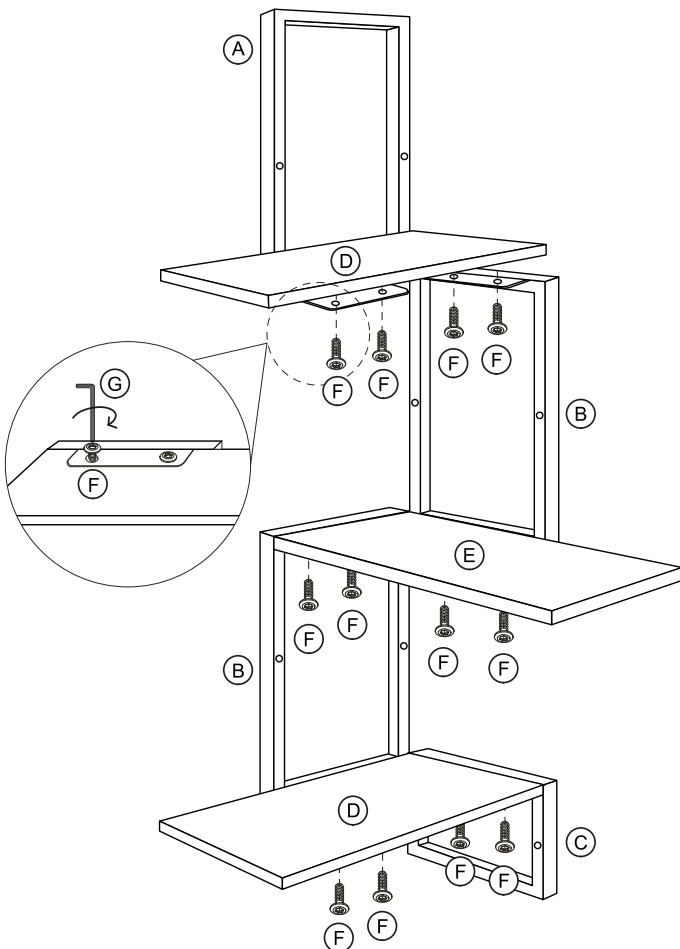
3 Tier Corner Wall Shelf

ITEM CODE : 412960

Assembly Instructions

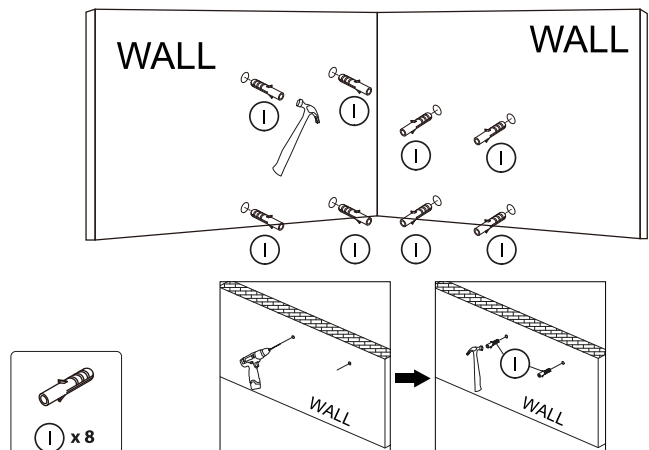


STEP 1

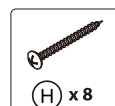
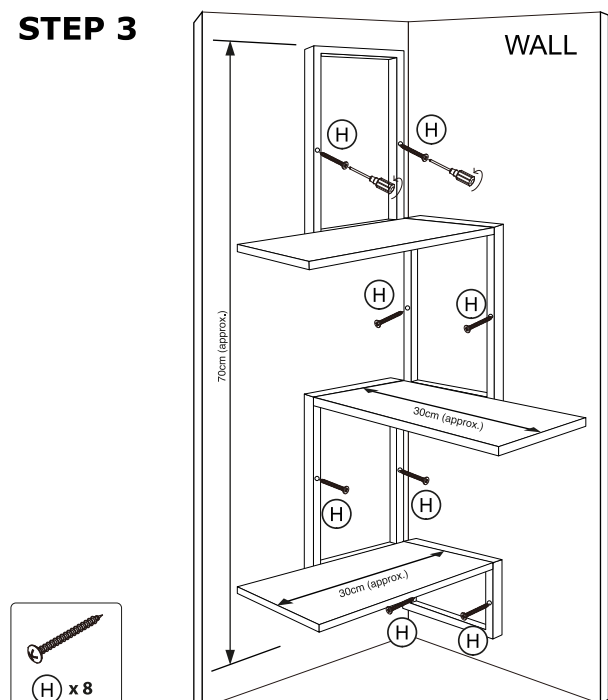


WARNING! Keep away from fire.
 Periodically ensure all the screws and fixings are secure and the item is stable.
 Indoor Use Only. Distribute weight upon this product's surface evenly.
 Care and cleaning: Wipe clean with dry cloth. Do not use abrasives, solvents and bleach products.
 Please read this instructions carefully and retain it for future reference.

STEP 2



STEP 3



Max. Loading: 9kg (3kg per shelf)
Domestic use only

B&M Retail, L24 8RJ, UK
www.bmstores.co.uk
 B&M France SAS, 8 Rue du Bois Joli, 63800, France
 MADE IN CHINA

