



ISABELLA 2 DRAWER BEDSIDE

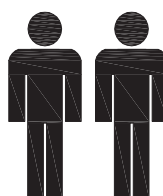
Item Code: 428994

Assembly Instructions

1.0hr

APPROXIMATE ASSEMBLY TIME

2 PERSON ASSEMBLY

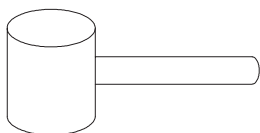


FLOOR AREA
2.0M X 2.0M

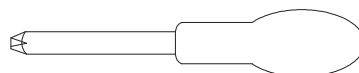


REQUIRED ASSEMBLY SPACE

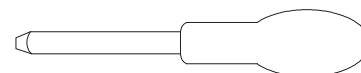
REQUIRED ASSEMBLY TOOLS



SOFT RUBBER HAMMER (Not Provided)

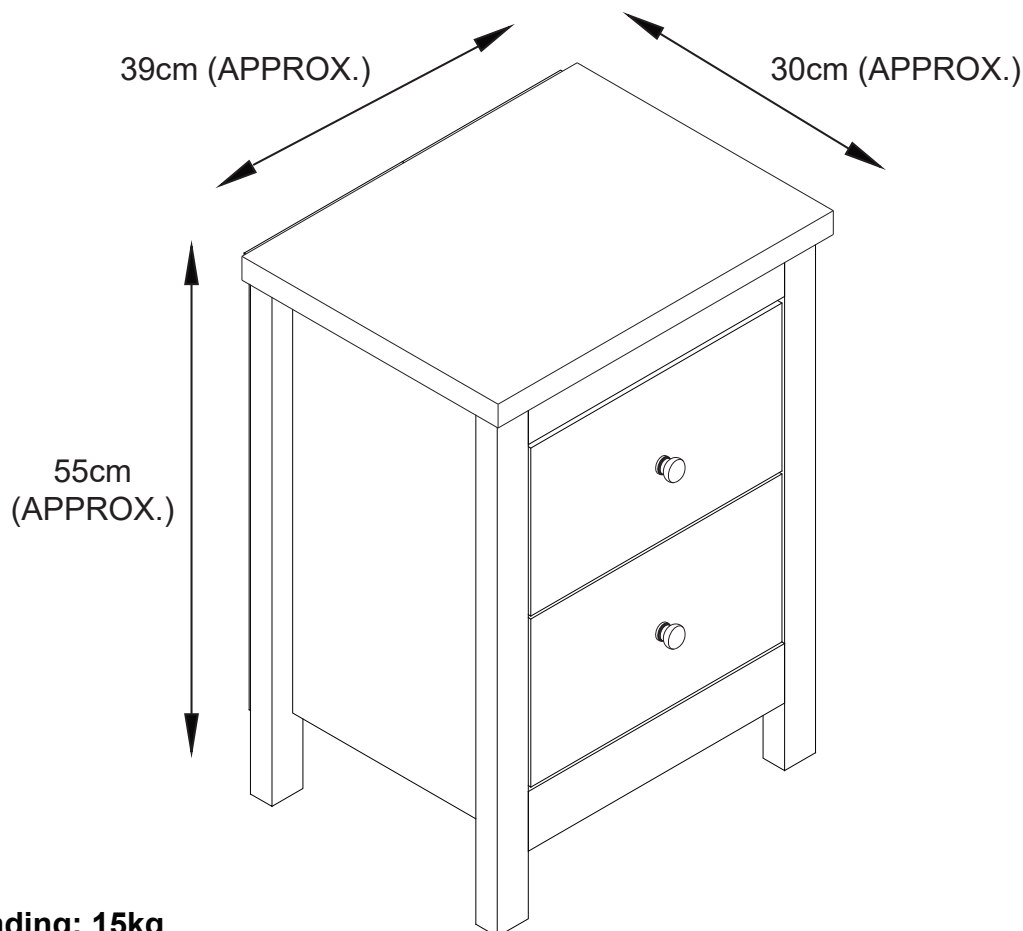


POZI SCREWDRIVER (Not Provided)



SLOTTED SCREWDRIVER (Not Provided)

ASSEMBLED DIMENSIONS



Max. Loading: 15kg

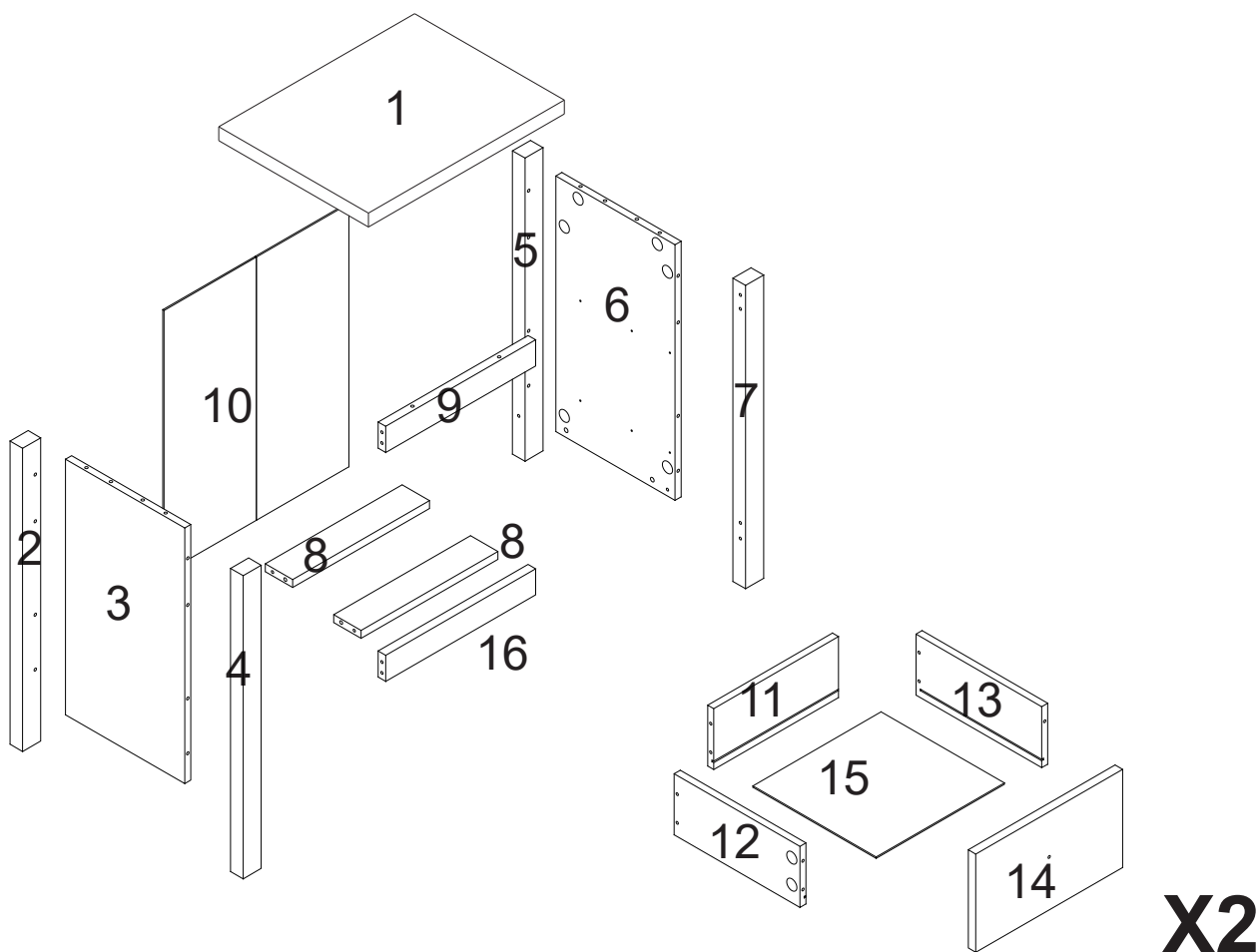
ISABELLA 2 DRAWER BEDSIDE

Item Code: 428994

Assembly Instructions

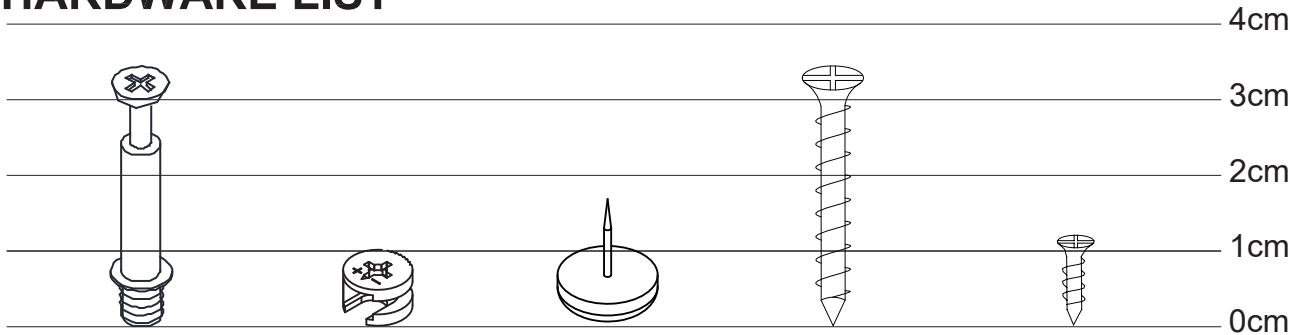
PART LIST

NO.	PART LIST	QTY	NO.	PART LIST	QTY
(1)	TOP PANEL	1	(9)	SUPPORT SHELF	1
(2)	LEFT SIDE LEG	1	(10)	BACK PANEL	1
(3)	LEFT SIDE PANEL	1	(11)	DRAWER BACK	2
(4)	LEFT SIDE LEG	1	(12)	DRAWER SIDE LEFT	2
(5)	RIGHT SIDE LEG	1	(13)	DRAWER SIDE RIGHT	2
(6)	RIGHT SIDE PANEL	1	(14)	DRAWER FRONT	2
(7)	RIGHT SIDE LEG	1	(15)	DRAWER BOTTOM	2
(8)	SUPPORT SHELF	2	(16)	SUPPORT SHELF	1



ISABELLA 2 DRAWER BEDSIDE
Item Code: 428994
Assembly Instructions

HARDWARE LIST



x28

x28

x4

x10

x24

M6 x 35mm

M15 x 10mm

M4 x 35mm

M3.5 x 12mm

A

B

C

D

E

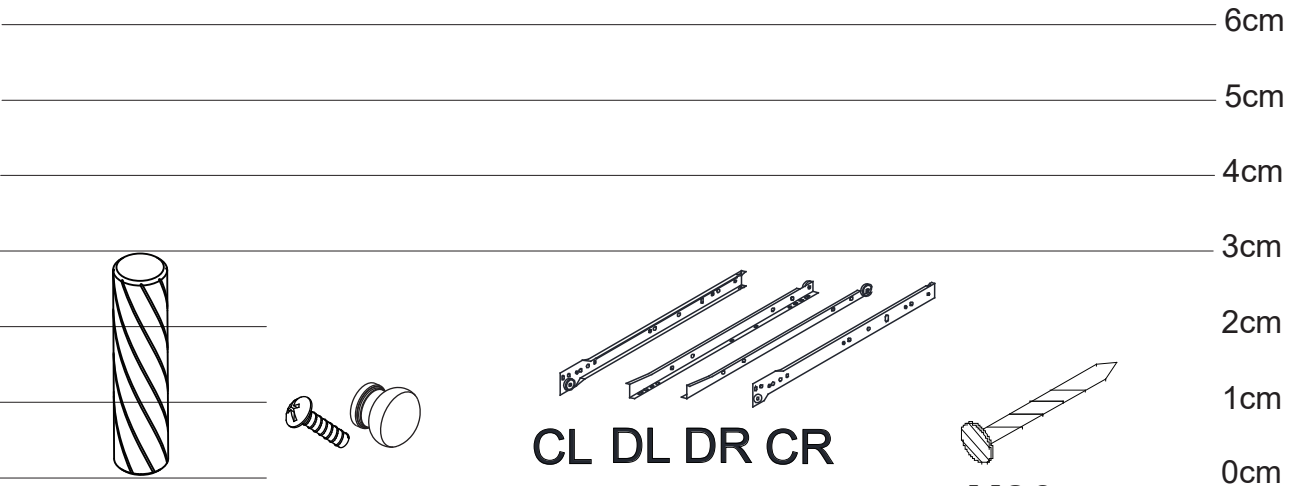
CAM BOLT

CAM NUT

FOOT NAIL

SCREW

SCREW



x21

x2

CL DL DR CR
x2

x20

M6 x 30mm

F

G

H

I

DOWEL

HANDLE
WITH SCREW

RUNNER

NAIL

ISABELLA 2 DRAWER BEDSIDE

Item Code: 428994

Assembly Instructions



Safety Advice and Care Advice

KEEP ALL THE SAFETY ADVICE AND INSTRUCTIONS IN A SAFE PLACE FOR FUTURE REFERENCE!



WARNING! RISK OF LOSS OF LIFE OR ACCIDENT

TO INFANTS AND CHILDREN! Never leave children unsupervised with the packaging materials. Danger of suffocation.



CAUTION! RISK OF INJURY! Make sure that all parts are undamaged and assembled correctly. Improper assembly carries a risk of injury. Damaged parts may affect the safety and function of the product.

- Adult assembly required.
- Power tools are not recommended for the assembly of this product.
- Make sure that this product is stable & used only on a solid & flat surface.
- Do not use this product unless all screws and fixings are firmly secured.
- Do not leave children unsupervised! The product is not a climbing frame or a toy!
- Do not stand, sit or lean on this product
- Do not use this product as a step ladder or as a chopping surface.
- Do not lift or move the product when it is loaded.
- Do not load more than a total of 15kg.
otherwise there is a risk of injury and/or damage to the product
- Distribute weight evenly across the product so that it cannot overturn.
- Do not place hot items such as coffee cups directly on the surface(s) unless adequately thick table mats are used.
- Please periodically check all fittings and re-tighten as necessary.
- For Indoor & Domestic use only.

Care instructions:

- Wipe clean with a dry cloth.
- Do not use scourers, abrasive or chemical solvents.
- Keep away from moisture and direct sunlight.
- Keep away from fire and inflammable objects.
- Store in a dry place.

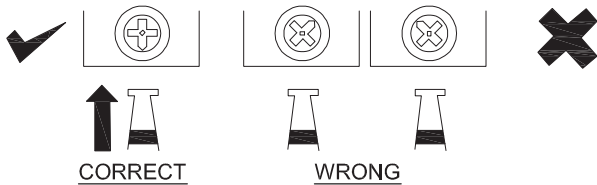
ISABELLA 2 DRAWER BEDSIDE

Item Code: 428994

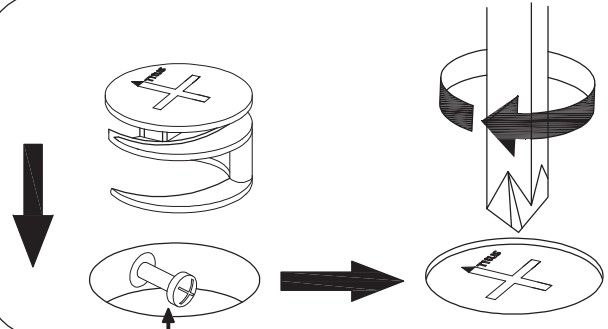
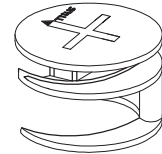
Assembly Instructions

SPECIAL TIPS FOR FITTING CAM-LOCKS AND QUICKFIT

WHEN FITTING CAMLOCK
ENSURE STARTING POSITION IS CORRECT
BEFORE YOU INSERT CONNECTING QUICKFIT
TURN CLOCKWISE UNTIL SECURE

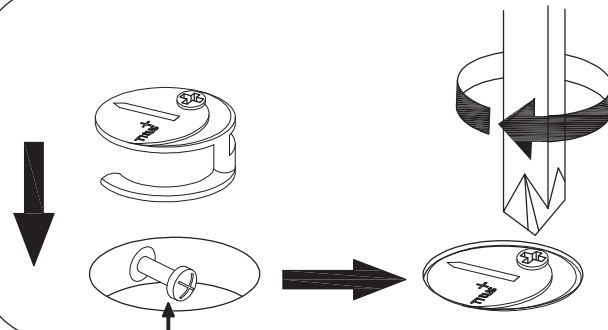
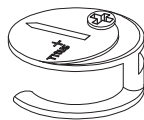


CAM-LOCK



Quickfit head needs to be in centre

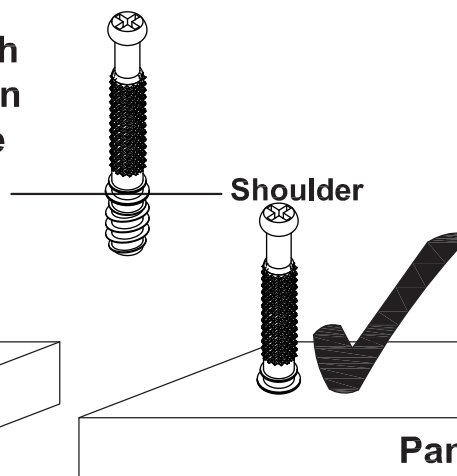
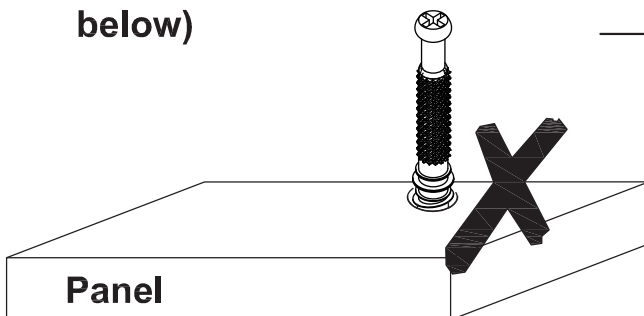
DRAWER CAM-LOCK



Quickfit head needs to be in centre

QUICKFIT

Tighten until shoulder is flush with panel. Do not overtighten or undertighten (see example below)

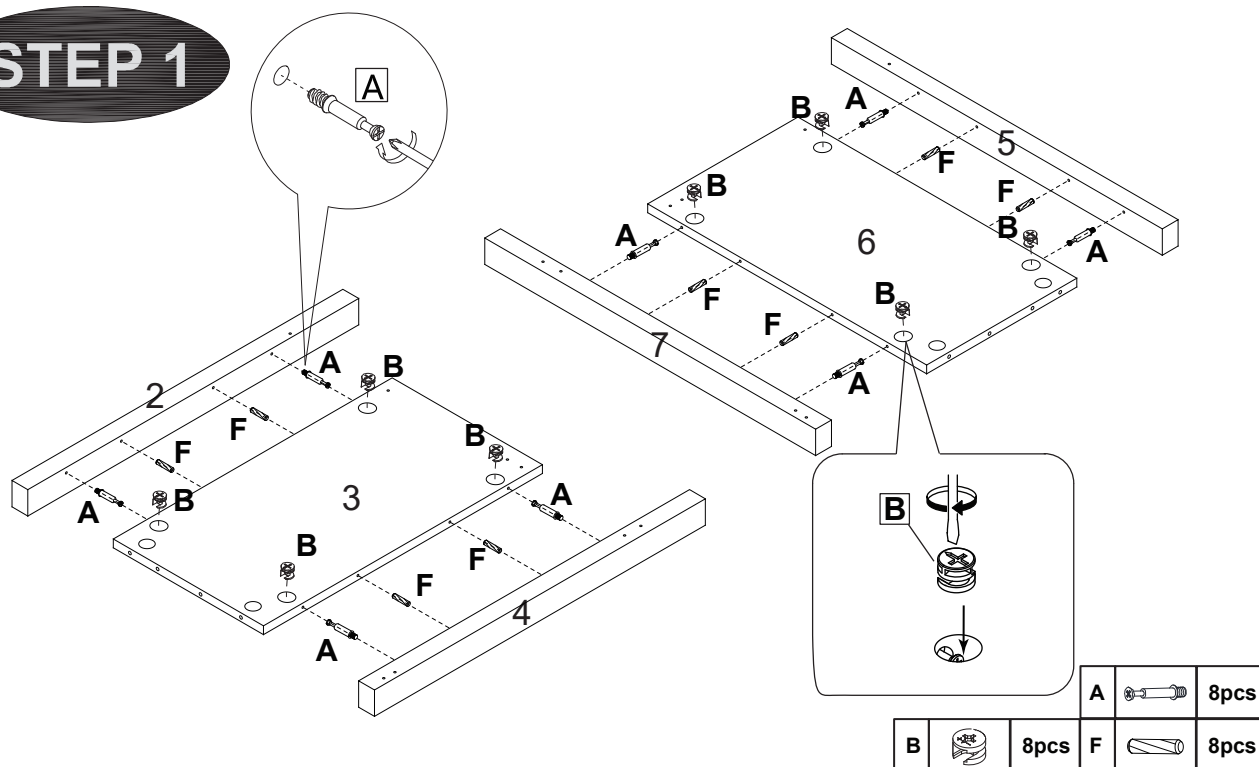


ISABELLA 2 DRAWER BEDSIDE

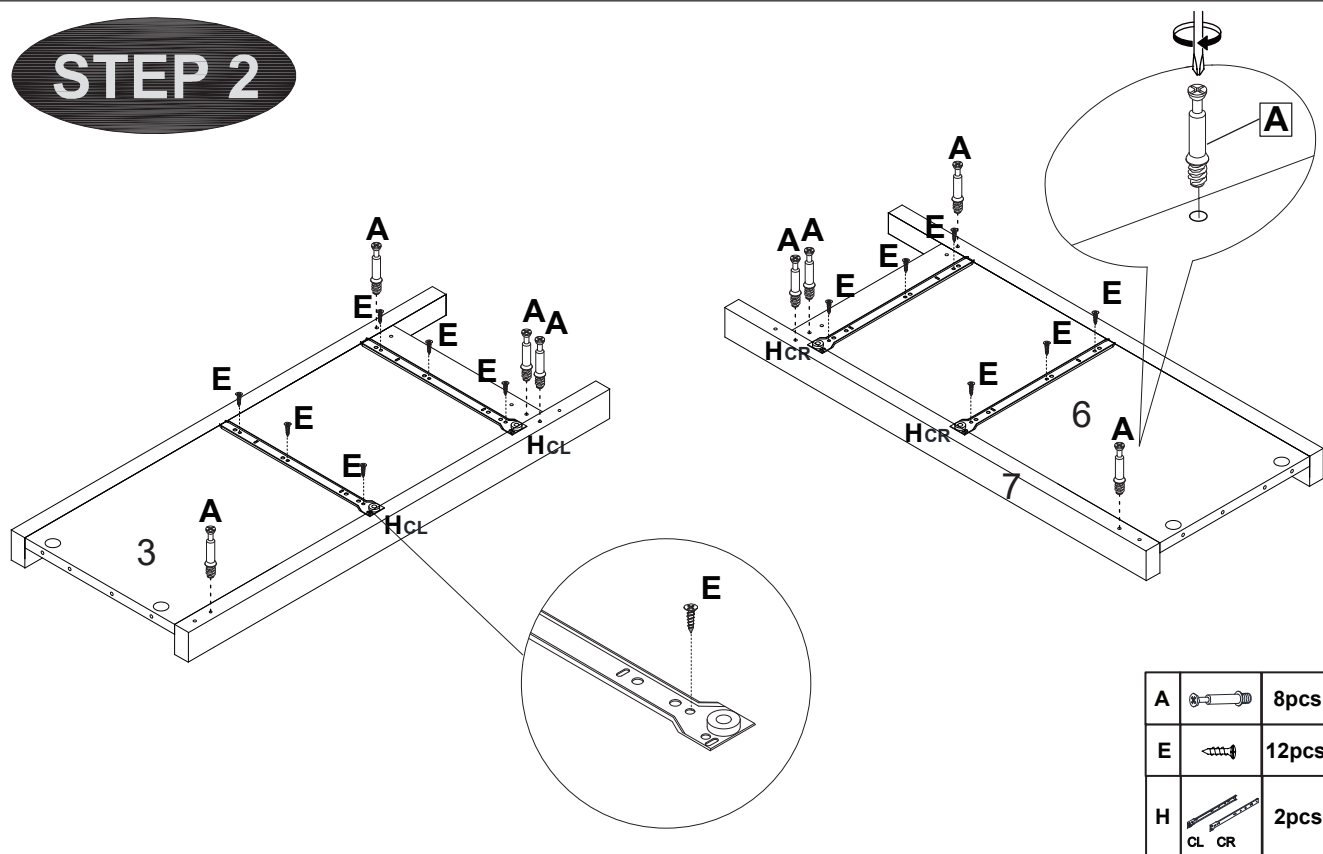
Item Code: 428994

Assembly Instructions

STEP 1



STEP 2

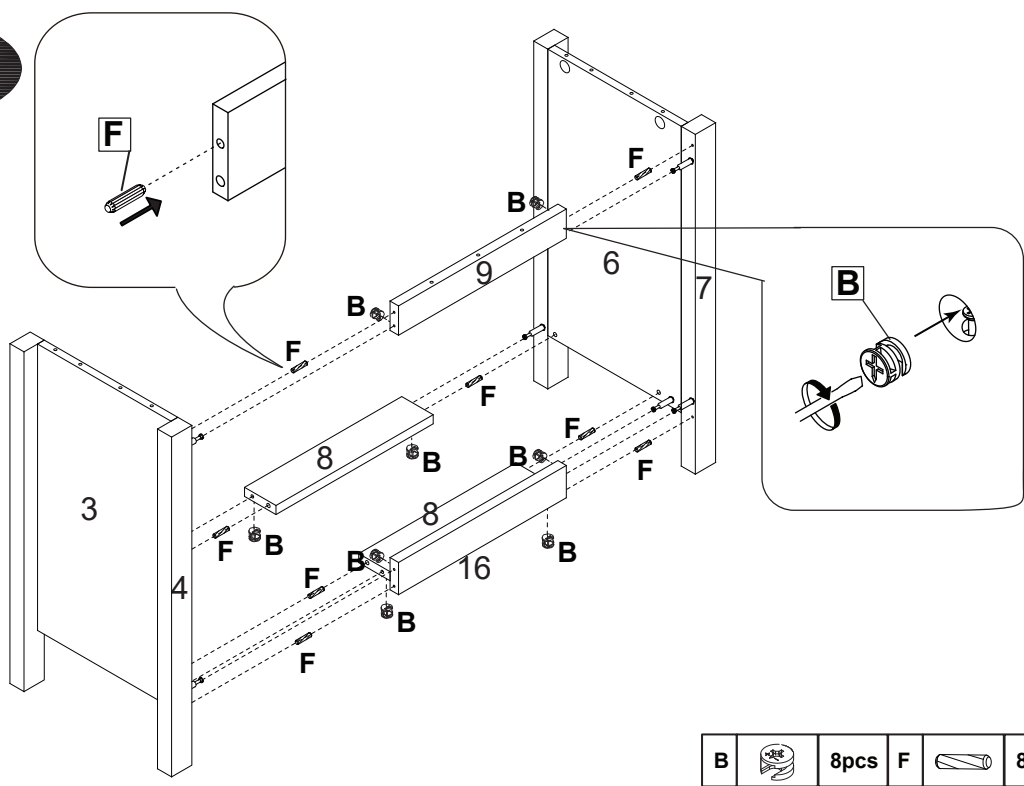


ISABELLA 2 DRAWER BEDSIDE

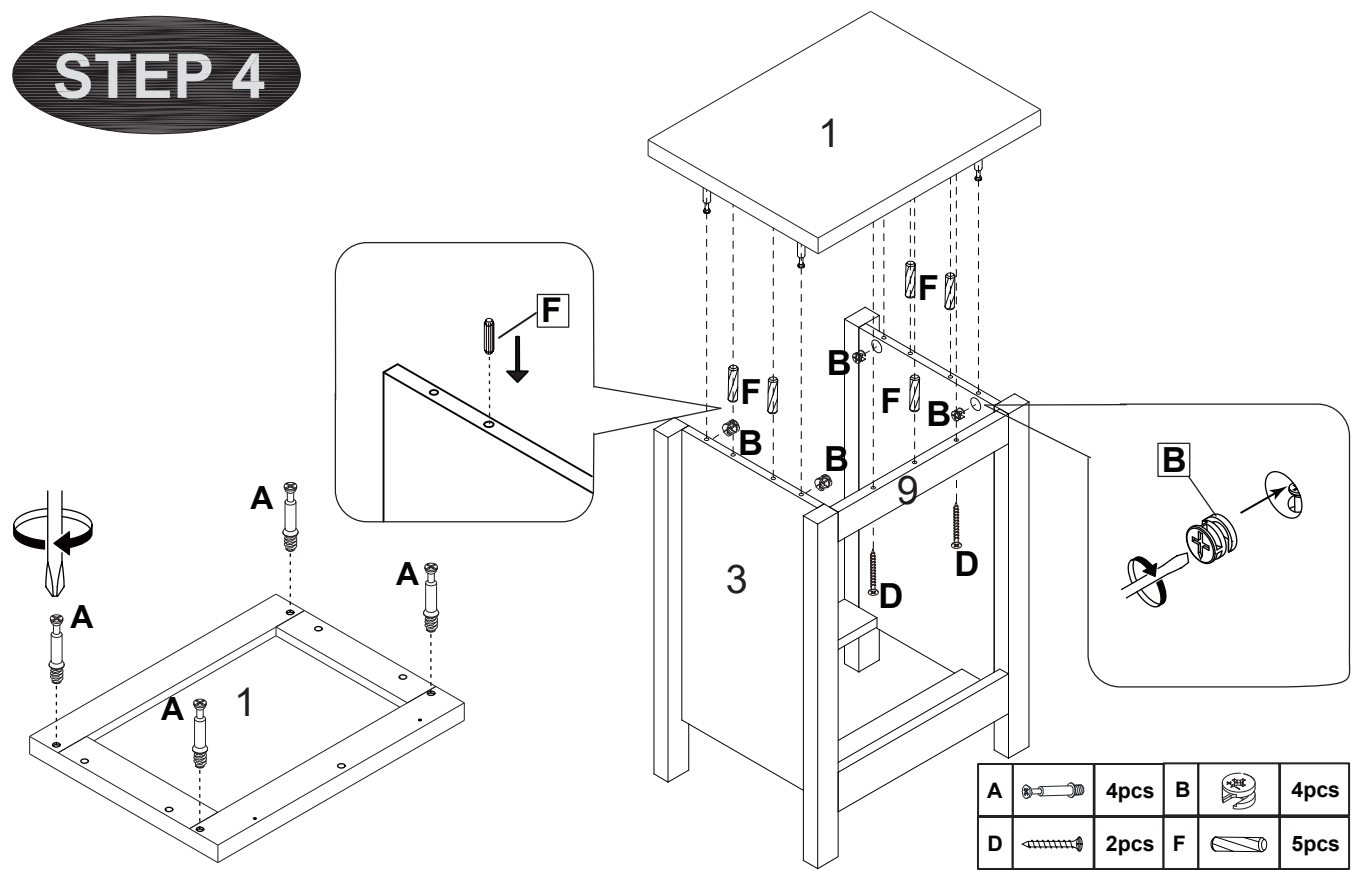
Item Code: 428994

Assembly Instructions

STEP 3

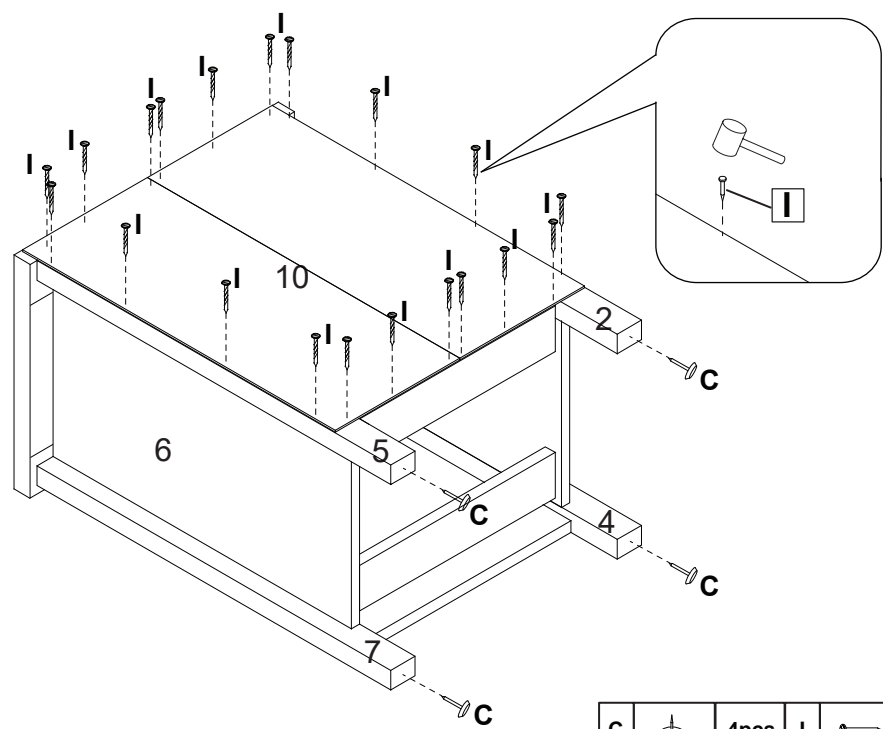


STEP 4

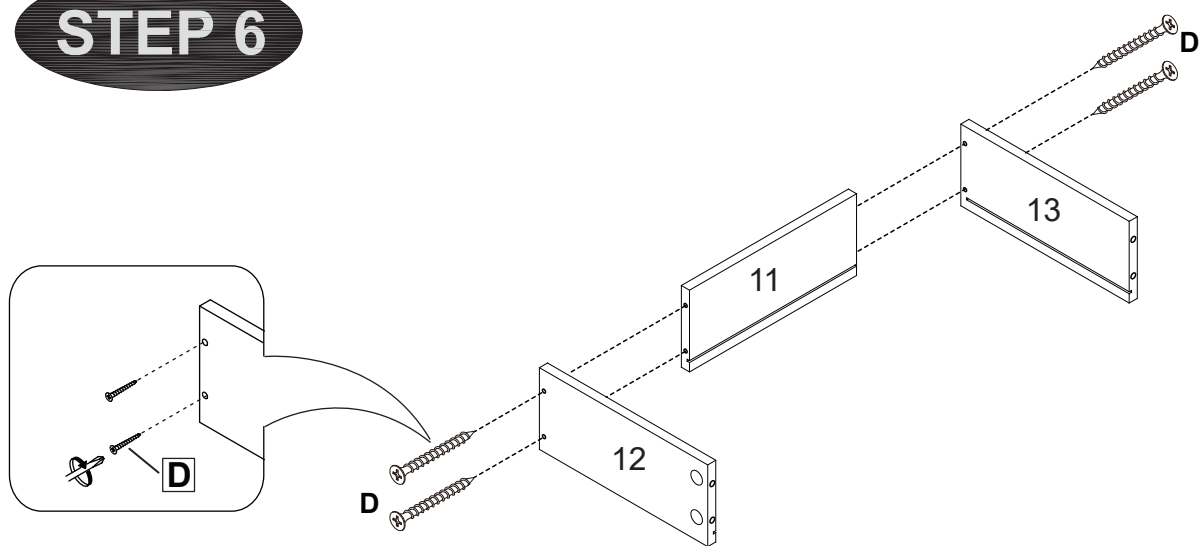


ISABELLA 2 DRAWER BEDSIDE
Item Code: 428994
Assembly Instructions

STEP 5



STEP 6

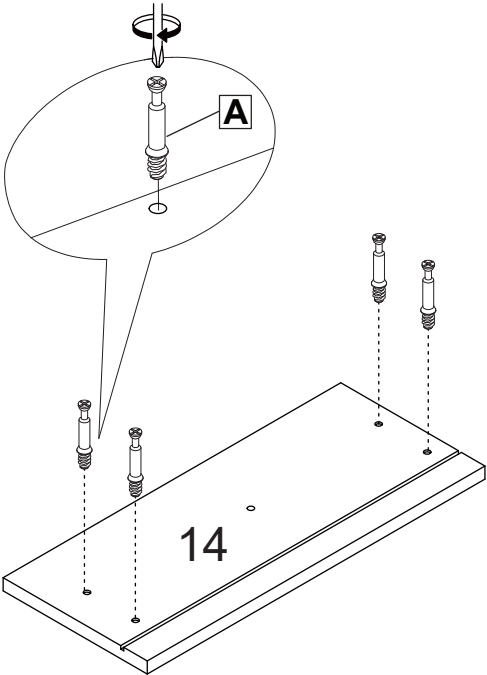


X2

D		8pcs
---	--	------

ISABELLA 2 DRAWER BEDSIDE
Item Code: 428994
Assembly Instructions

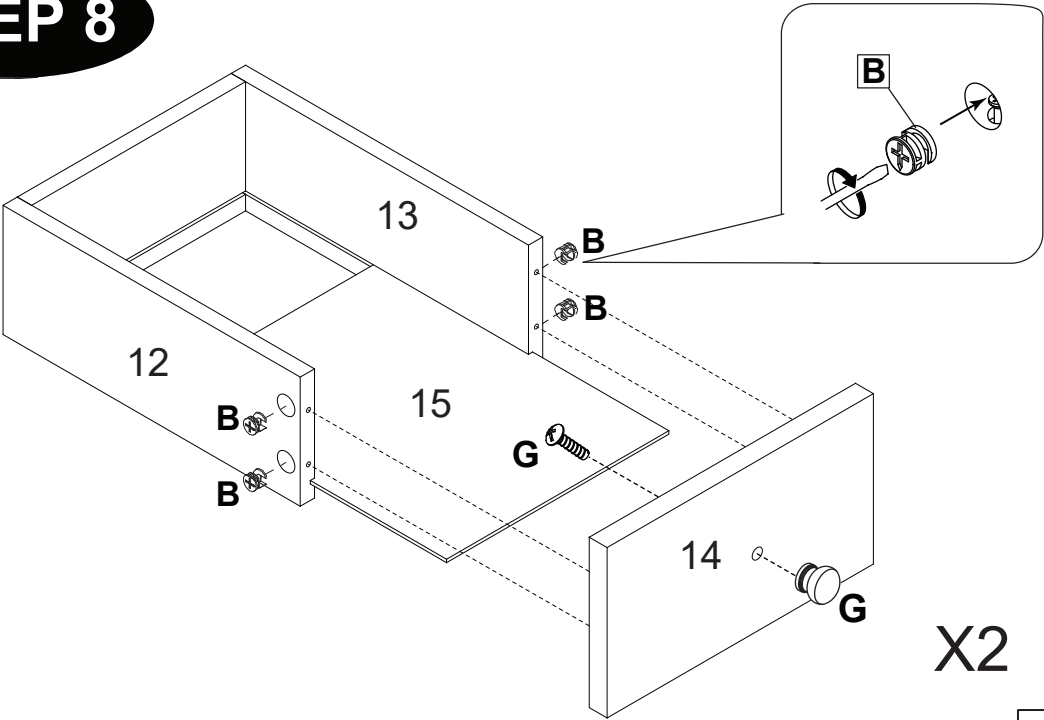
STEP 7



X2

A		8pcs
---	--	------

STEP 8



X2

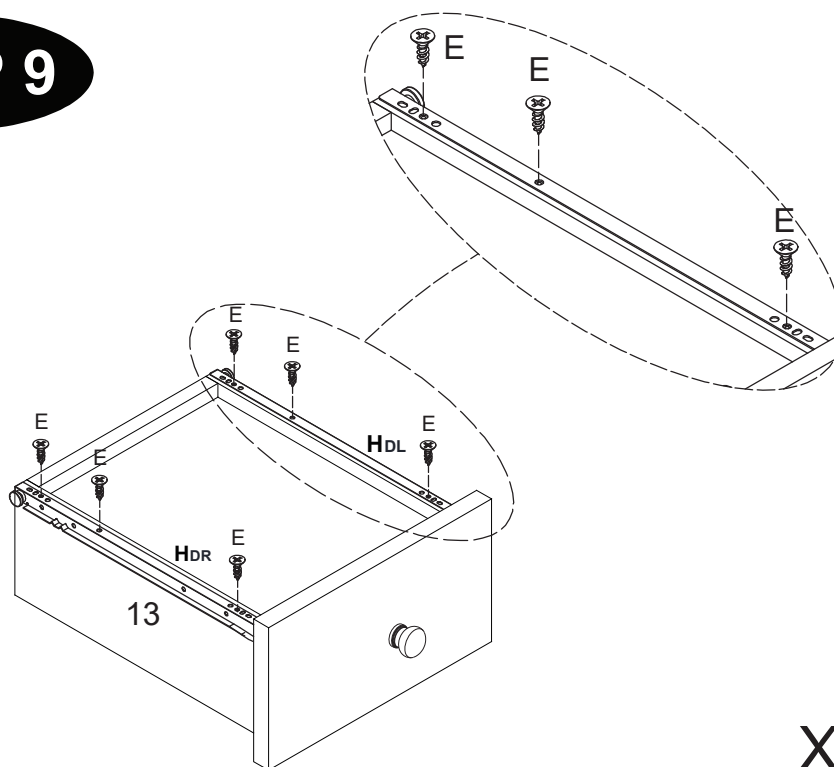
B		8pcs
G		2pcs

ISABELLA 2 DRAWER BEDSIDE

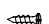

Item Code: 428994

Assembly Instructions

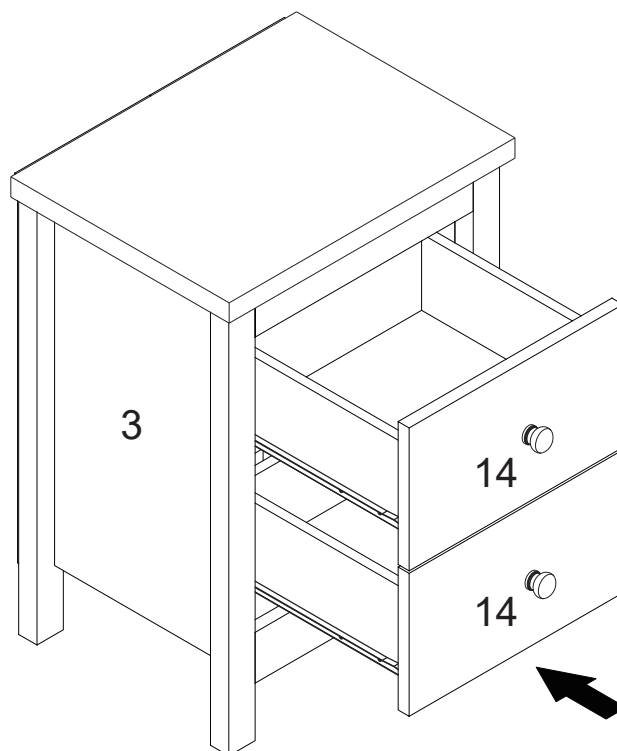
STEP 9



X2

E		12pcs
H		2pcs
DL DR		

STEP 10

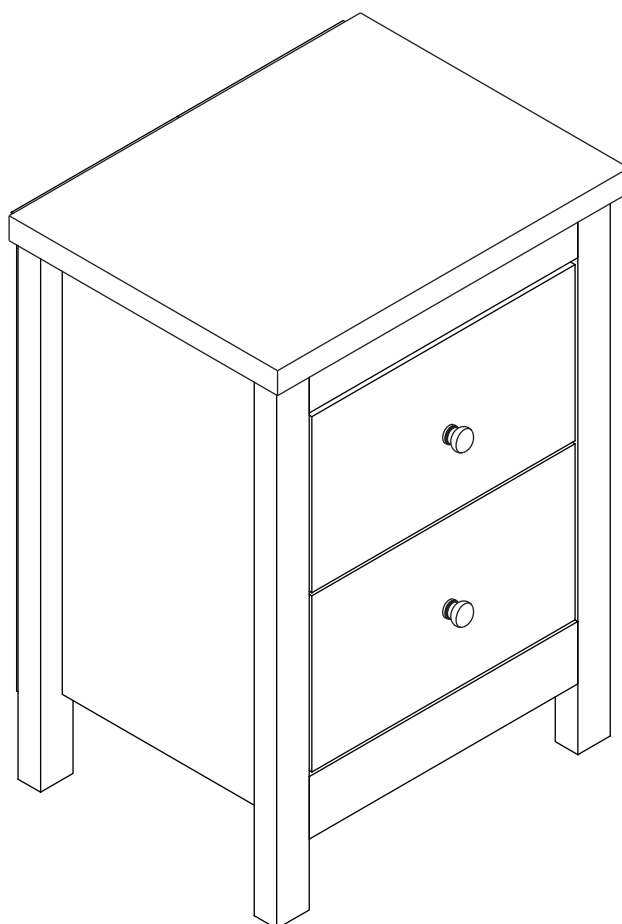


ISABELLA 2 DRAWER BEDSIDE

Item Code: 428994

Assembly Instructions

STEP 11



Domestic use only



B&M Retail, L24 8RJ, UK
www.bmstores.co.uk
B&M France SAS, 8 Rue du Bois Joli, 63800, France
MADE IN CHINA